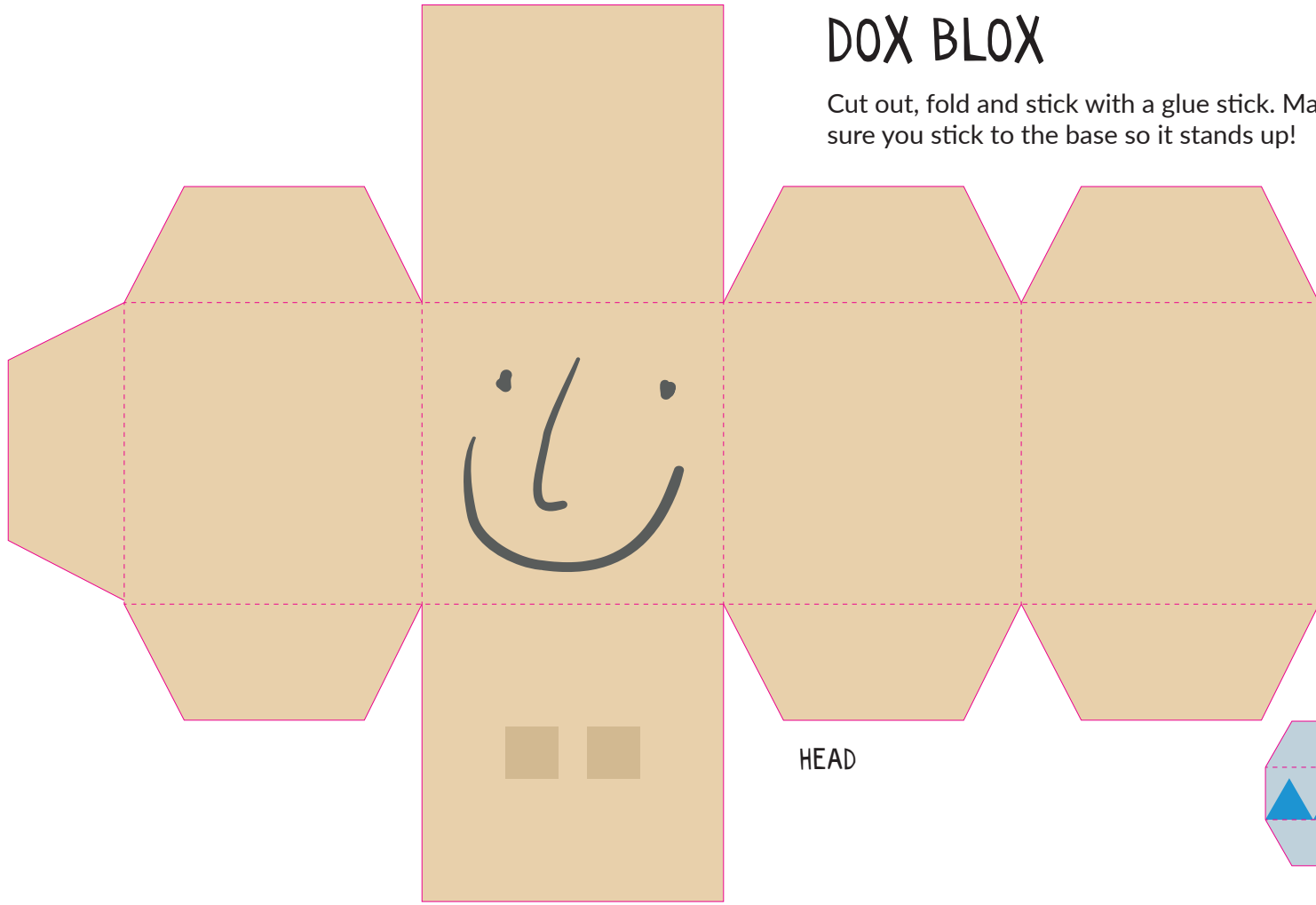
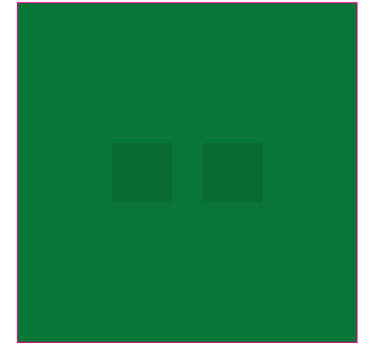


# DOX BLOX

Cut out, fold and stick with a glue stick. Make sure you stick to the base so it stands up!

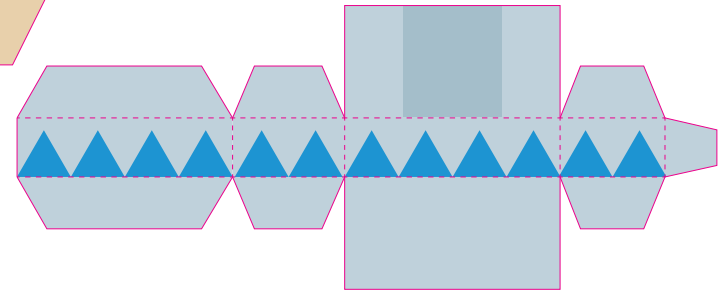


HEAD

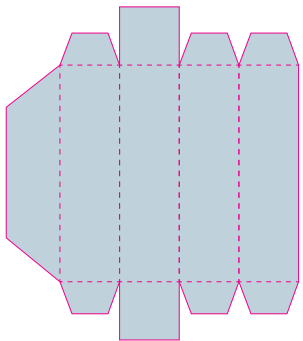


BASE

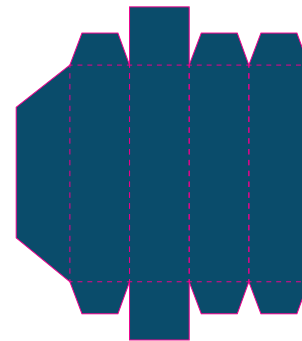
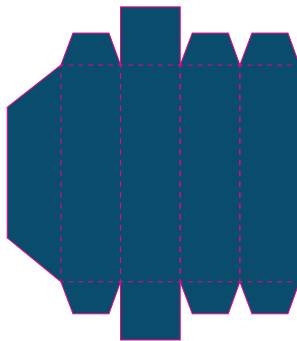
LOWER TORSO



ARMS

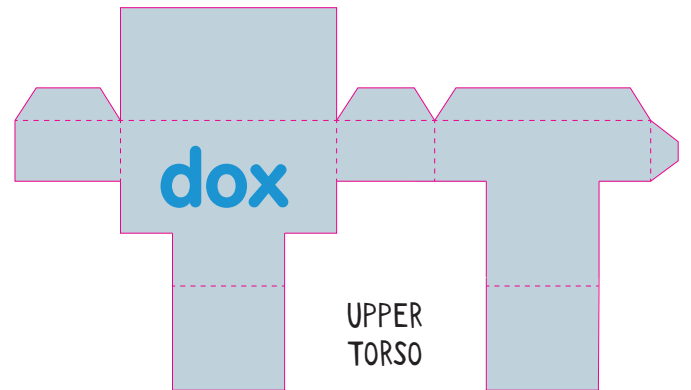


LEGS



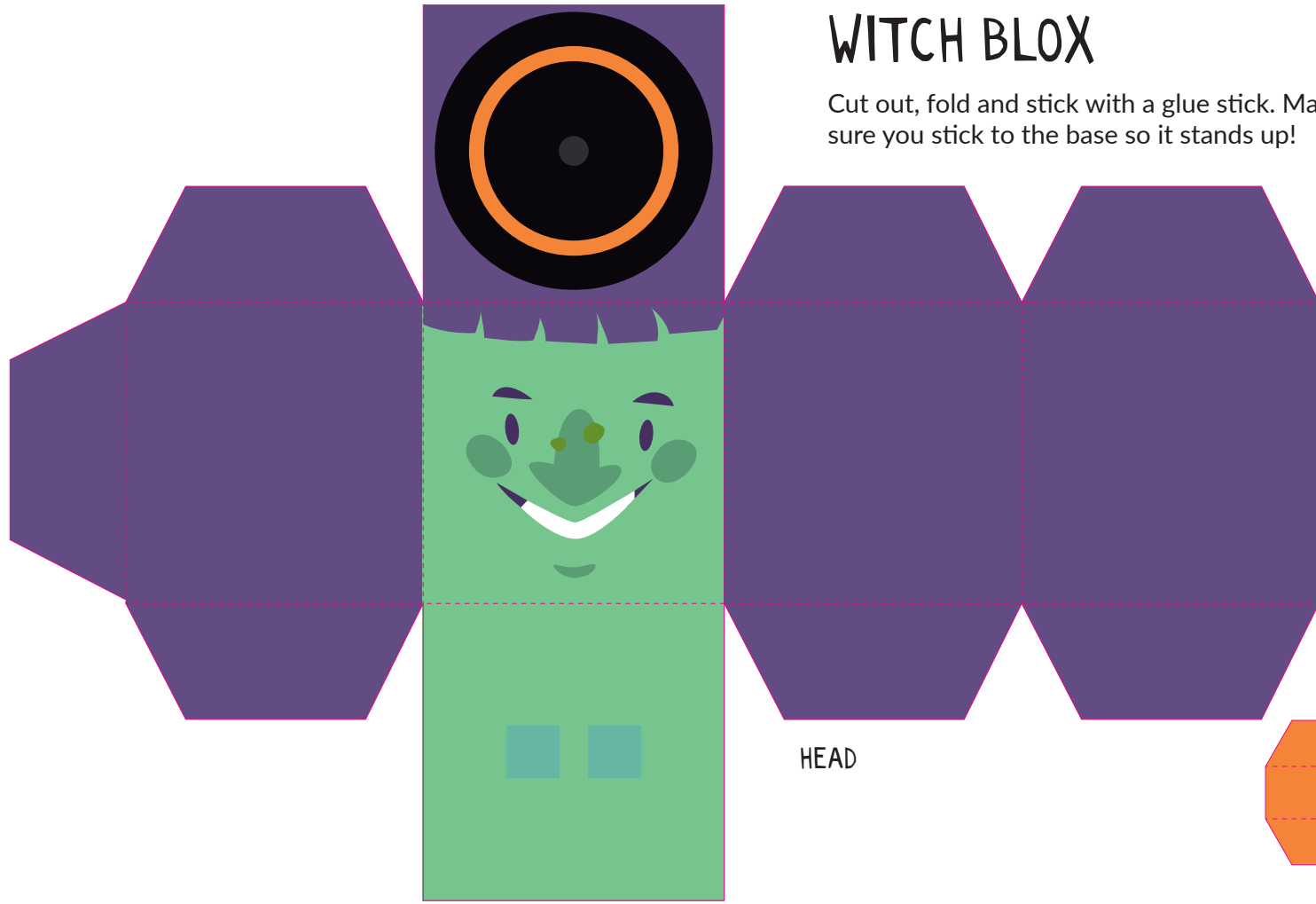
dox

UPPER TORSO



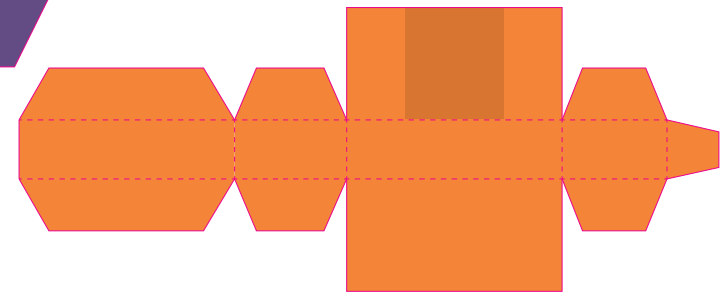
# WITCH BLOX

Cut out, fold and stick with a glue stick. Make sure you stick to the base so it stands up!

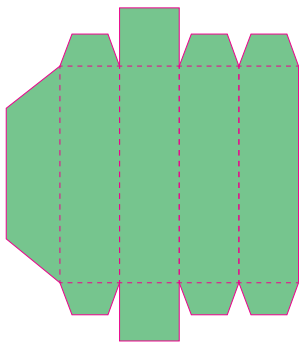
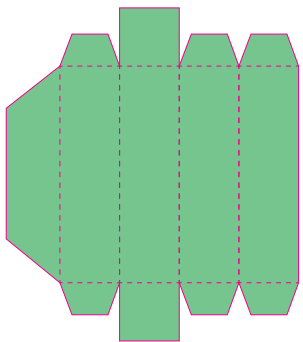


BASE

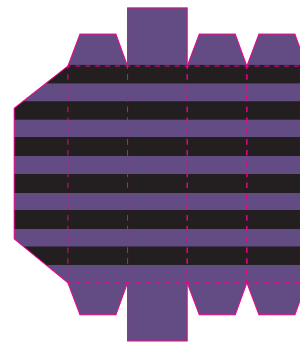
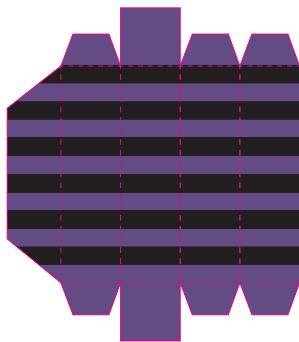
LOWER TORSO



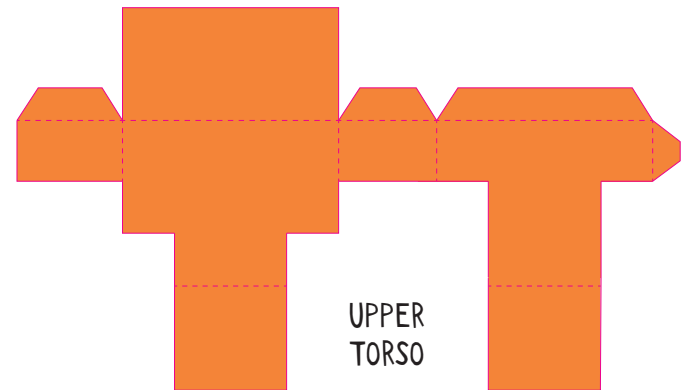
ARMS



LEGS

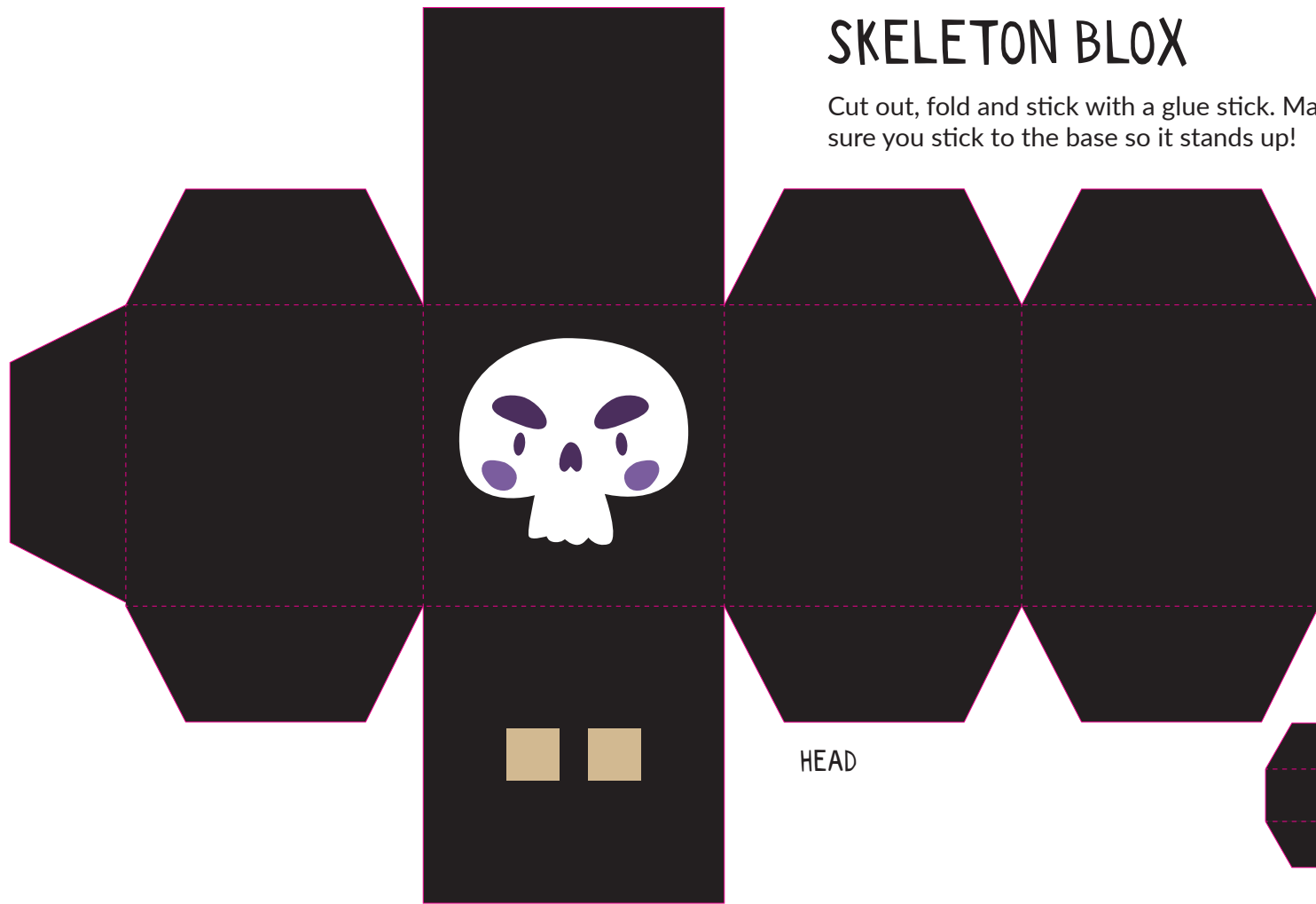


UPPER TORSO

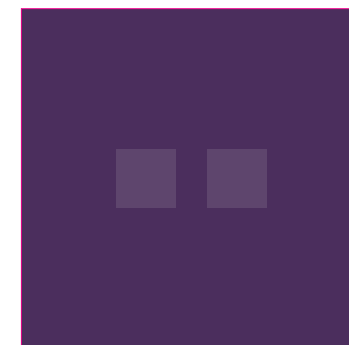


# SKELETON BLOX

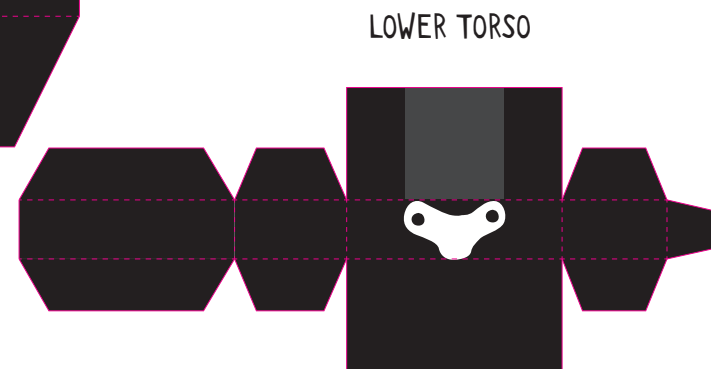
Cut out, fold and stick with a glue stick. Make sure you stick to the base so it stands up!



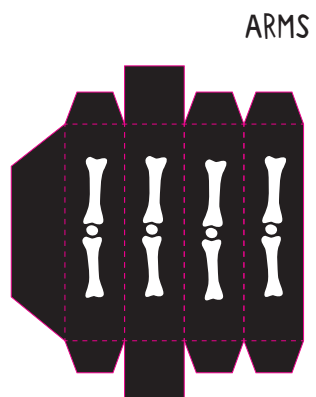
HEAD



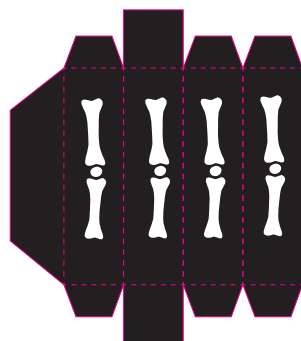
BASE



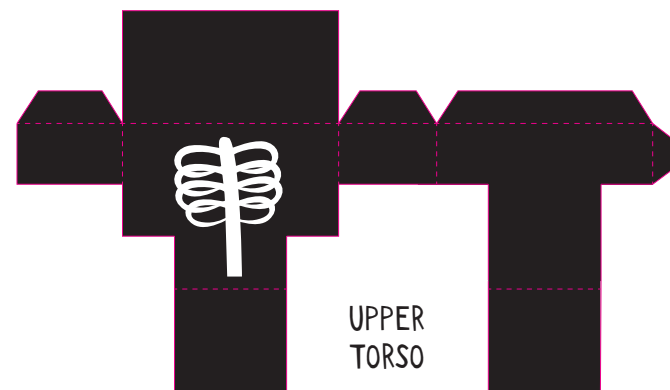
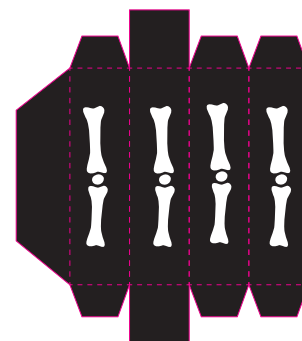
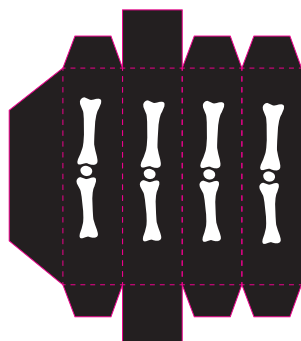
LOWER TORSO



ARMS



LEGS



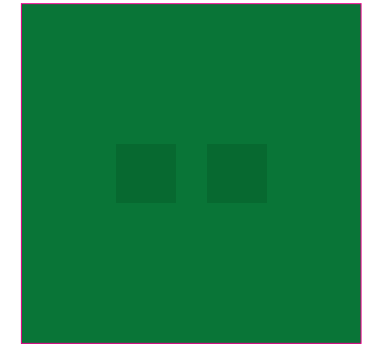
UPPER TORSO

# PUMPKIN BLOX

Cut out, fold and stick with a glue stick. Make sure you stick to the base so it stands up!

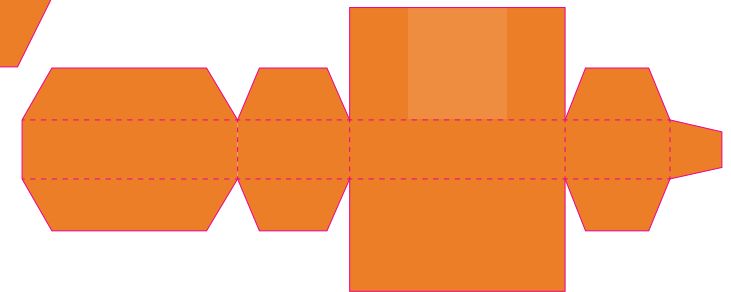


HEAD

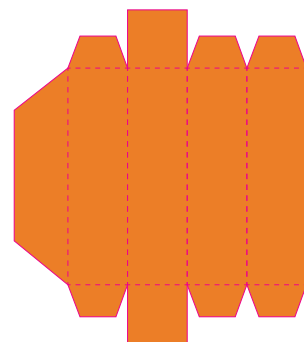
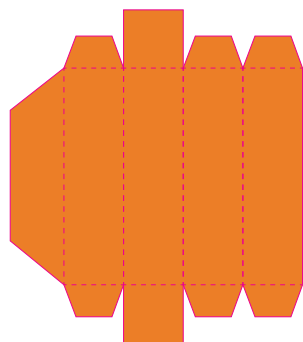
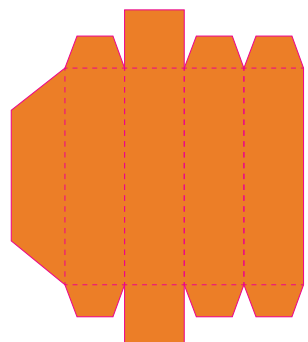


BASE

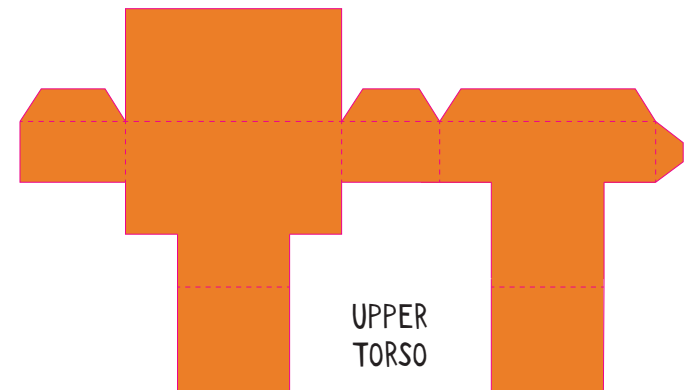
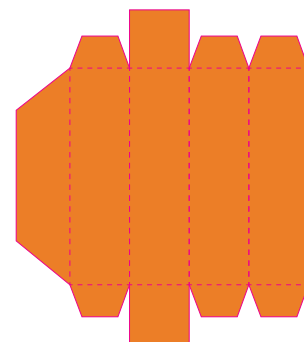
LOWER TORSO



ARMS



LEGS



UPPER TORSO